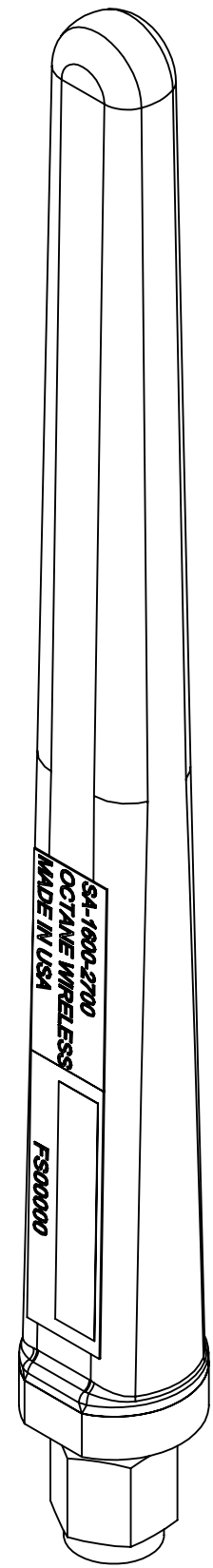


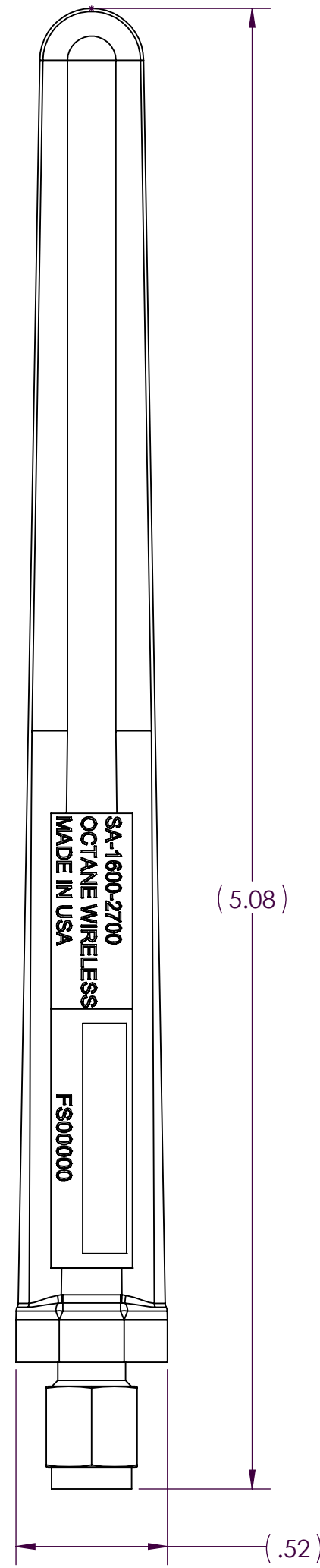
NOTES:

1. OCTANE P/N: 102853
2. TRACEABILITY: OCTANE S/N
3. ALL DIMENSIONS IN PARENTHESES () ARE REFERENCE ONLY.
6. PART MARKING: OCTANE MODEL NUMBER LABEL
5. FREQUENCY RANGE: 1600-2700 MHz
6. WEIGHT: 0.5 OZ

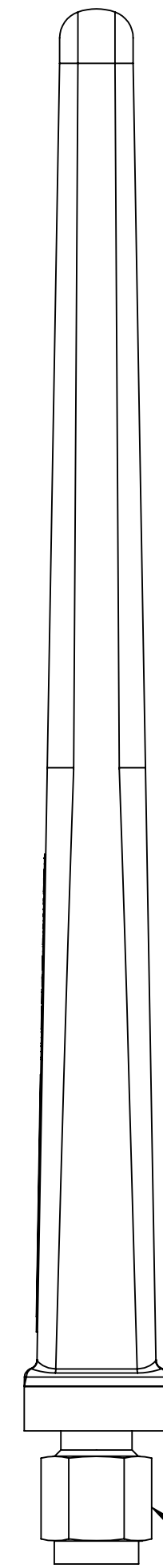
REVISIONS				
ZONE	REV.	DESCRIPTION	DATE	APPROVED
N/A	A	DWG RELEASE	3/5/2021	BZG
N/A	B	DWG UPDATE	5/6/2021	CLQ
N/A	C	UPDATE PCB AND RADOME	3/19/2025	DJD



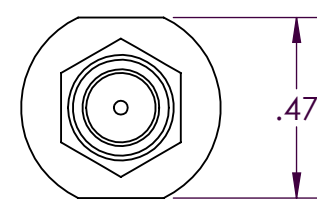
ISO VIEW



FRONT VIEW



RIGHT VIEW



BOTTOM VIEW

THIRD ANGLE PROJECTION

PROPRIETARY AND CONFIDENTIAL
THE INFORMATION CONTAINED IN THIS DRAWING IS THE SOLE PROPERTY OF OCTANE WIRELESS. ANY REPRODUCTION IN PART OR AS A WHOLE WITHOUT THE WRITTEN PERMISSION OF OCTANE WIRELESS IS PROHIBITED.

UNLESS OTHERWISE SPECIFIED: DIMENSIONS ARE IN INCHES	NAME	DATE	OCTANE WIRELESS 1340 CHARWOOD ROAD, SUITE L HANOVER, MD 21076
TOLERANCES: TWO PLACE DECIMAL ±.010 THREE PLACE DECIMAL ±.005 ANGULAR ±1°	DRAWN	BZG 03/05/21	
MATERIAL	CHECKED	CLQ 05/06/21	
FINISH	ENG APPR.	DN 03/05/21	
DO NOT SCALE DRAWING	MFG APPR.	AF 03/05/21	
SEE NOTES	COMMENTS:		TITLE: ASSEMBLY, STUB ANTENNA, 1600-2700 MHZ, SMA MALE CONNECTOR

SIZE	DWG. NO.	REV
C	SA-1600-2700	C
SHEET SCALE 2:1		SHEET 1 OF 1